

Presaturated precision wipers in a resealable container

Made in Germany

The MINICONT® is a hermetically tight sealing storage container for pre-saturated cleaning wipers. These wipers of type SONIT® MDM or SONIT® HDM are washed in a multistep process and rinsed with ultra-pure water before they are presaturated with a mixture of ultra-high quality isopropyl alcohol and ultra-pure water. The alcohol concentrations and the amount of moisture can be specified by the user, in order to adapt the cleaning wipers to the particular application. Due to the hermetically sealed closure of the container, the cleaning wipers remain moist for weeks, thus avoiding the disadvantages of peel-and-reseal foil packs. In principle, many of our wipers can be packed in this kind of storage container. Our sales department will be glad to provide you with information. Of course, we also offer refill packages for the MINICONT® container in various alcohol-ultra-pure water concentrations.

Characteristics

knitware from multifilament yarn, presaturated in hermetically sealed container

Features

concentration and grade of humidity can be chosen by customer, refill packs obtainable

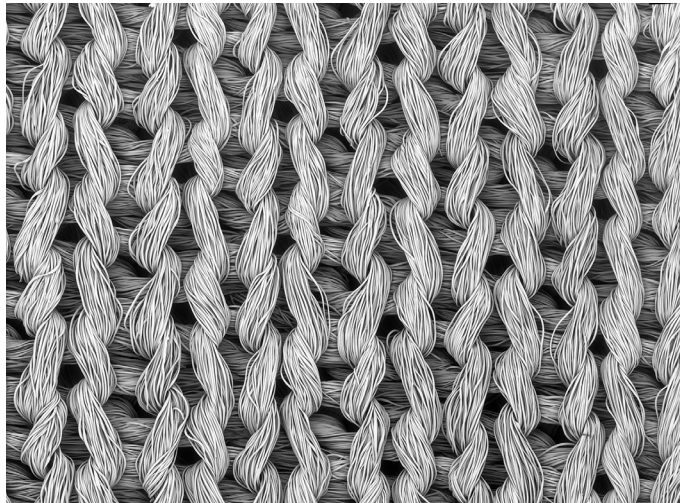
Application

for periodical wet cleaning processes in cleanrooms and laboratories of the semiconductor and pharmaceutical industry

General technical specification

Textile construction	knitware
Mesh / cm ²	370 / 540
Cutting	laser beam
Treatment	none
Decontaminated	yes
Washable	possible
Sterilisable	possible
Stat. Quality control	yes

The image on the right, taken with our scanning electron microscope, clearly shows the fineness of the yarn used to make this knitted wiper. The cloth is close-meshed, which makes it especially suitable for picking up small-dimensioned particles. Polyester yarns have a high tensile strength even in these small diameters, so that fibre breakage during cleaning work is rare in comparison to wiping cloths with high cellulose or viscose content. This knitted wiper adapts closely to the topography of the machine or technical surfaces, enabling efficient precision cleaning in relatively little time.



SEM photo Yuko Labuda, image width 3 mm

SONIT® MDM / SONIT® HDM

General technical data

Mechanical parameters	Value	Unit	After method
Thickness	0.52 / 0.60	mm	ISO 9073-2
Surface weight	147 / 185	g/m ²	ISO 9073-1
Break load dry, longitudinal direction	259 / 424	N	ISO 9073-3
Break load dry, lateral direction	456 / 460	N	ISO 9073-3
Elongation at break, longitudinal direction	90 / 86	mm	ISO 9073-3
Elongation at break, lateral direction	83 / 117	mm	ISO 9073-3
Particle release data	Value	Unit	After method
Labuda-Cleaning efficacy based on oil type MULTIDRAW KTL N 16	70.2 / 83.2	%	C&C-W-RE
Particle residue (Particle > 0.5 µm) after wiping on surface Rz 5 µm	4 / 3	k-Part/cm ²	C&C-W-PF-S
Particle residue (Particle > 0.5 µm) after wiping on surface Rz 39 µm	8 / 6.8	k-Part/cm ²	C&C-W-PF-S
Air particle release (at 40% relH) by Labuda Fulling Simulator Mk1	307 / 275	Part 0.5 µm/ min	
Cleanroom class according to ISO 14644-1	Cleanroom consumables cannot be specified for air purity classes (see VDI 2083 - sheet 9.2).		
Water absorption (DI water)	Value	Unit	After method
Total	302 / 431	g/m ²	
Average absorption rate in 5 s	0.31 / 0.44	g	C&C-W-AK-R
Average absorption rate in 60 s	0.47 / 0.7	g	C&C-W-AK-R
Drop absorption time	992 / 151	ms	C&C-W-EZ
DI-Water after wet wiping	11 / 6	%	C&C-W-RF
Chemical resistance	Value	Unit	After method
Charge of break-load (long) after 2.5 min immersion into various solvents			
Dry	259 / 424	N	C&C-W-CF
Water	+9 / -4	%	C&C-W-CF
Isopropyl	+15 / +11	%	C&C-W-CF
Acetone	+17 / +5	%	C&C-W-CF

SONIT® MDM / SONIT® HDM

Triboelectricity at 40% relH and room temperature	Value	Unit	After method
Discharge after 60 s	11.2 / 50.0	%	CC-W-TE

Anion and cation inventory in ppm measurement with capillary electrophoresis

Chloride	Fluoride	Nitrate	Nitrite	Phosphate	Sulphate		
0.06 / 0.10	0.13 / 0.07	0.25 / 0.53	0.03 / -	0.08 / -	0.03 / -		
Ammonium	Barium	Calcium	Potassium	Lithium	Magnesium	Sodium	Strontium
0.04 / 0.05	- / -	0.11 / 0.10	0.09 / 0.16	- / -	- / -	0.08 / 0.23	- / -

All data in this sheet are based on measurements taken at the time of their issuance. The publication of this document does not constitute a guarantee for the continued compliance with these data. On request, you will receive current data and tolerance limits from our laboratory. Subject to change without prior notice. Errors and omissions excepted. Clear & Clean is a company certified according to the EN ISO 9001 : 2015 standard. The quality assurance measures are described in our quality manual. When the data contained in this data sheet are changed, no automatic alteration is made. Clean room consumable products cannot be classified according to a clean room class for air purity according to ISO-14644-1.

Order and packing information MINICONT® / SONIT® HDM

Type	Sort	Delivery form	Pieces per pack	Concentration	Container, ml
CC146M30	Original container	moist	80	30% IPA / 70% DI water	800
CC146N30	Refill pack	moist	50	30% IPA / 70% DI water	500
CC146M70	Original container	moist	80	70% IPA / 30% DI water	800
CC146N70	Refill pack	moist	50	70% IPA / 30% DI water	500

Order and packing information MINICONT® / SONIT® MDM

Type	Sort	Delivery form	Pieces per pack	Concentration	Container, ml
CC166M30	Original container	moist	80	30% IPA / 70% DI water	700
CC166N30	Refill pack	moist	50	30% IPA / 70% DI water	400
CC166M70	Original container	moist	80	70% IPA / 30% DI water	700
CC166N70	Refill pack	moist	50	70% IPA / 30% DI water	400