

# SIBIS-GDU



Knit wiper for cleaning screens and for absorbing or applying fluids

Made in Germany

The SIBIS-GDU wiper is developed especially for screen cleaning in hybrid circuit or scale printing. It is also suitable for other applications where quite large quantities of liquids or pasty substances have to be taken up and securely bound. Due to the special mesh construction and the special qualities of the yarns used, the SIBIS-GDU has a large inner volume. With its high retention capability, the cloth can absorb large quantities of liquids very fast, thus effectively reducing cleaning time. Polyester yarns ensure the outstanding abrasion resistance of the cloth surface, a quality which is e.g. indispensable for cleaning printing screens. This knitted wiper is also suitable for applying liquids to surfaces, such as surface disinfectants or primers. Due to the relatively great absorption volume of the cloth, the number of wetting processes can be reduced, thus saving time.

## Characteristics

knitware from microfilament yarn, flat packs

## Features

outstanding absorbency, lasercutted edges

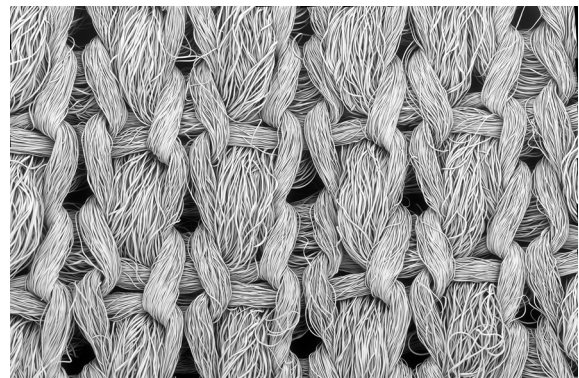
## Application

absorption of high liquid quantities e.g. cleaning of printing, screens or wiping with disinfectants

## General technical specification

Textile construction	knitware	
Mesh / cm <sup>2</sup>	170	
Cutting	laser beam	
Possible decontamination	none	
Decontaminated	no	
Washable	possible	
Sterilisable	possible	
Stat. Quality control	yes	

The image on the right, made with our scanning electron microscope, shows the surface of the SIBIS-GDU magnified 90 times. The textured yarns and structure of the binding which together give the cloth the large inside surface are clearly visible here. The special kind of binding contributes to optimising the liquid absorption capacity by providing the cloth with relatively large cavities which can take up and bind liquids. Each individual mesh of the knitted cloth has a fluffy zone and a mesh row framing this fluffy zone textile-technologically. The hard frame yarns facilitate the removal of adhesive contaminants.



SEM photo Yuko Labuda, image height 3 mm

### General technical data

Mechanical parameters	Value	Unit	After method
Thickness	1.0	mm	ISO 9073-2
Surface weight	251	g/m <sup>2</sup>	ISO 9073-1
Break load dry, longitudinal direction	246	N	ISO 9073-3
Break load dry, lateral direction	337	N	ISO 9073-3
Elongation at break, longitudinal direction	124	mm	ISO 9073-3
Elongation at break, lateral direction	90	mm	ISO 9073-3

Particle release data	Value	Unit	After method
Labuda-Cleaning efficacy based on oil film MULTIDRAW KTL N 16	71.6	%	C&C-W-RE
Particle residue (Particle > 0.5 µm) after wiping on surface Rz 5 µm	6.56	k-Part/cm <sup>2</sup>	C&C-W-PF-S
Particle residue (Particle > 0.5 µm) after wiping on surface Rz 39 µm	10.1	k-Part/cm <sup>2</sup>	C&C-W-PF-S
Air particle release (at 40% relH) by Labuda Fulling Simulator Mk1	592	Part 0.5 µm/min	
Cleanroom class according to ISO 14644-1	Cleanroom consumables cannot be specified for air purity classes (see VDI 2083 - sheet 9.2).		

Water absorption (DI water)	Value	Unit	After method
Total	927.6	g/m <sup>2</sup>	
Average absorption rate in 5 s	0.79	g	C&C-W-AK-R
Average absorption rate in 60 s	1.19	g	C&C-W-AK-R
Drop absorption time	30	ms	C&C-W-EZ
DI-Water after wet wiping	8	%	C&C-W-RF

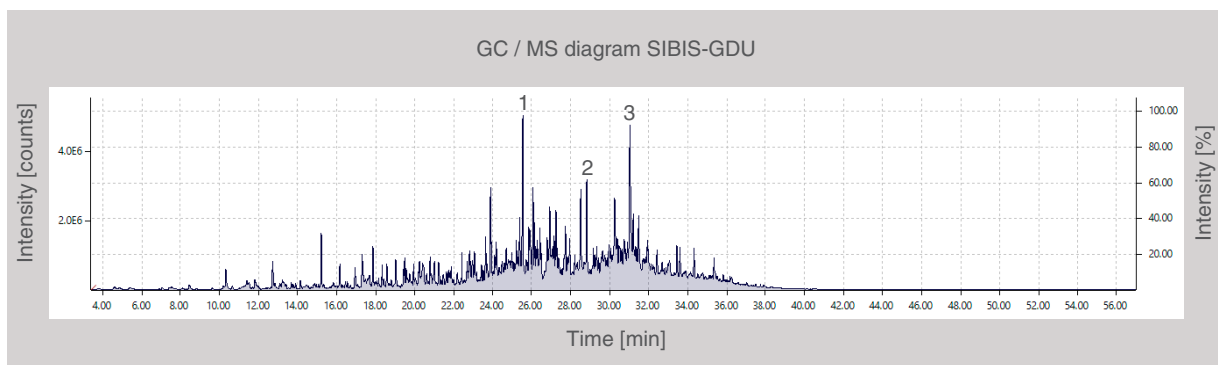
Chemical resistance	Value	Unit	After method
Charge of break-load (long) after 2.5 min immersion into various solvents			
Dry	246	N	C&C-W-CF
Water	+4	%	C&C-W-CF
Isopropyl	+8	%	C&C-W-CF
Acetone	+7	%	C&C-W-CF

<b>Triboelectricity</b> at 40% relH and room temperature	<b>Value</b>	<b>Unit</b>	<b>After method</b>
Discharge after 60 s	> 99	%	CC-W-TE

**Anion and cation inventory in ppm measurement with capillary electrophoresis**

Chloride	Fluoride	Nitrate	Nitrite	Phosphate	Sulphate		
1.39	0.26	1.67	-	-	3.38		
Ammonium	Barium	Calcium	Potassium	Lithium	Magnesium	Sodium	Strontium
0.05	-	1.18	0.75	-	0.28	1.54	-

All data in this sheet are based on measurements taken at the time of their issuance. The publication of this document does not constitute a guarantee for the continued compliance with these data. On request, you will receive current data and tolerance limits from our laboratory. Subject to change without prior notice. Errors and omissions excepted. Clear & Clean is a company certified according to the EN ISO 9001 : 2015 standard. The quality assurance measures are described in our quality manual. When the data contained in this data sheet are changed, no automatic alteration is made. Clean room consumable products cannot be classified according to a clean room class for air purity according to ISO-14644-1.



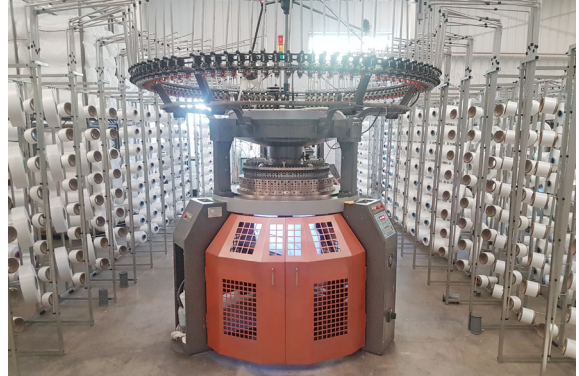
Outgassing at 90 ° C. 1: dodecanol 2: tetradecanal 3: ethylhexyl benzoate

<b>Order and packing information SIBIS-GDU</b>							
Type	Dimensions in cm	Folding	Content pcs / pack	Packs per carton	Pieces per carton	Weight per carton in kg	Dimensions p. carton in cm
CC156	22 x 22	bulk pack	50	20	1000	13.5	57 x 38 x 42
CC157	40 x 40	bulk pack	50	8	400	18.7	58 x 40 x 44

## From yarn to hi-tech cleaning wipers



knitted multifilament yarn as roll goods



an industrial knitting machine



our laser formatting for knit wipers



Example: our aquatic decontamination



our visual inspection and packaging in the ISO 5 clean room



Example: cleaning optical components