

biodegradable nonwoven

Made in Germany

The high-tech cleaning wiper VISCO-PAN® is a non-woven wiper that is made entirely from the renewable raw material cotton and is 100% compostable and decomposable. To produce the nonwoven, the raw cotton is first dissolved in a chemical process and the resulting solution is thoroughly cleaned. The loosened cotton is then converted into an endless filament using a spinning process, from which the nonwoven is finally made. This special manufacturing process means that there is no need for any binding agents and a wiper of extremely high purity is obtained. Since it is an endless filament, the particle and fiber emission is lower than with other nonwovens. In addition, the material has a high level of heat resistance and a high discharge capacity for electrostatic charges.

The adjacent SEM image shows the spun endless filaments. In contrast to natural cotton fibers made from raw cellulose, the filaments have a very smooth surface that gives off only a few particles. Their structure is very similar to that of other fully synthetic fibers made of polyester and polyamide. Since the basic material is cellulose, which generally has a very high swelling capacity when it comes into contact with liquids and solvents, large amounts of liquid can be absorbed with the wiper without any problems.

## Characteristics

HiTech wiper made from renewable raw materials, interfolded for use in dispenser boxes

## Features

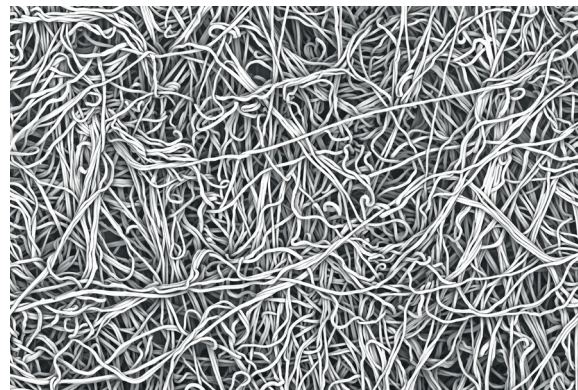
excellent liquid absorption with very high chemical purity

## Application

for all cleaning tasks in less critical areas, no residues when soaking with solvents for cleaning purposes

## General technical specification

Textile construction	nonwoven	
Mesh / cm <sup>2</sup>	-	
Cutting	mechanically	
Treatment	none	
Decontaminated	no	
Washable	no	
Sterilisable	possible	
Stat. Quality control	yes	



SEM photo Yuko Labuda, image height 3 mm

**General technical data**

<b>Mechanical parameters</b>	<b>Value</b>	<b>Unit</b>	<b>After method</b>
Thickness	0.30	mm	ISO 9073-2
Surface weight	60	g/m <sup>2</sup>	ISO 9073-1
Break load dry, longitudinal direction	38	N	ISO 9073-3
Break load dry, lateral direction	38	N	ISO 9073-3
Elongation at break, longitudinal direction	32	mm	ISO 9073-3
Elongation at break, lateral direction	57	mm	ISO 9073-3

<b>Particle release data</b>	<b>Value</b>	<b>Unit</b>	<b>After method</b>
Labuda-Cleaning efficacy based on oil film MULTIDRAW KTL N 16	88	%	C&C-W-RE
Particle residue (Particle > 0.5 µm) after wiping on surface Rz 5 µm	0.78	k-Part/cm <sup>2</sup>	C&C-W-PF-S
Particle residue (Particle > 0.5 µm) after wiping on surface Rz 39 µm	4.05	k-Part/cm <sup>2</sup>	C&C-W-PF-S
Air particle release (at 40% relH) by Labuda Fulling Simulator Mk1	2207	Part 0.5 µm/ min	
Cleanroom class according to ISO 14644-1	Cleanroom consumables cannot be specified for air purity classes (see VDI 2083 - sheet 9.2).		

<b>Water absorption (DI water)</b>	<b>Value</b>	<b>Unit</b>	<b>After method</b>
Total	478	g/m <sup>2</sup>	-
Average absorption rate in 5 s	0.53	g	C&C-W-AK-R
Average absorption rate in 60 s	0.89	g	C&C-W-AK-R
Drop absorption time	93	ms	C&C-W-EZ
DI-Water after wet wiping	7	%	C&C-W-RF

<b>Chemical resistance</b>	<b>Value</b>	<b>Unit</b>	<b>After method</b>
Charge of break-load (long) after 2.5 min immersion into various solvents			
Dry	38	N	C&C-W-CF
Water	-55	%	C&C-W-CF
Isopropyl	-15	%	C&C-W-CF
Acetone	-15	%	C&C-W-CF

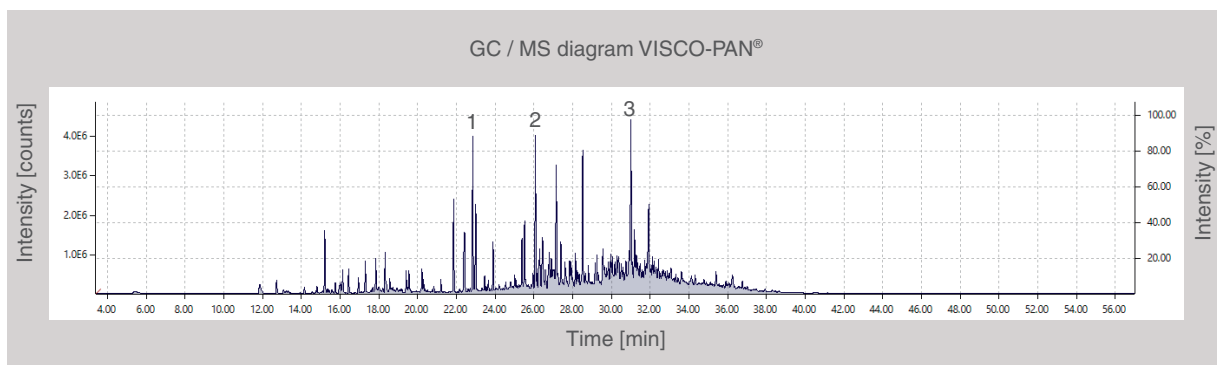
Triboelectricity at 40% relH and room temperature	Value	Unit	After method
Discharge after 60 s	> 99	%	CC-W-TE

#### Anion and cation inventory in ppm measurement with capillary electrophoresis

Chloride	Fluoride	Nitrate	Nitrite	Phosphate	Sulphate		
1.887	n. n.	4.334	n. n.	1.571	0.415		
Ammonium	Barium	Calcium	Potassium	Lithium	Magnesium	Sodium	Strontium
0.411	n. n.	n. n.	0.343	n. n.	n. n.	6.447	n. n.

All data in this sheet are based on measurements taken at the time of their issuance. The publication of this document does not constitute a guarantee for the continued compliance with these data. On request, you will receive current data and tolerance limits from our laboratory. Subject to change without prior notice. Errors and omissions excepted. Clear & Clean is a company certified according to the EN ISO 9001 : 2015 standard. The quality assurance measures are described in our quality manual. When the data contained in this data sheet are changed, no automatic alteration is made. Clean room consumable products cannot be classified according to a clean room class for air purity according to ISO-14644-1.

VISCO-PAN® is a registered trademark (No. 3020202212186) of Clear & Clean Werk für Reintechnik GmbH in Lübeck.



Outgassing at 90 ° C 1: butyl carbitol acetate 2: octadecane 3: heptacosane

#### Order and packing information / single packs VISCO-PAN®

Type	Dimensions in cm	Folding	Content pcs / pack	Packs per carton	Pieces per carton	Weight per carton in kg	Dimensions p. carton in cm
CC545	25 x 22	Inter	100	50	5000	24.0	80 x 60 x 45